



GENUS GROUP OF COMPANIES

Genus Coal & Coke Ltd.

Moradabad,
U.P.

Genus Power Infrastructures Ltd.

Jaipur, Rajasthan
A BSE/NSE Listed Company

Genus Innovations Ltd.

Jaipur, Rajasthan

Genus Electrotech Ltd.

Gandhidham, Gujarat

Genus Paper & Boards Ltd.

Moradabad, U.P.
A BSE/NSE Listed Company

Genus Apparels Limited

Faridabad, Haryana



HISTORY OF GENUS



Genus Coal & Coke
Limited
(1984)



Genus Power
Infrastructures Ltd.
(1994)



Genus Paper
Products Ltd.
(2002)



Genus Apparels
Limited
(2003)



Genus
Electrotech Ltd.
(2004)



Genus
Innovation Ltd.
(2015)

PRODUCTS & INDUSTRIES



Television



Solar Inverters



IFPDs



Washing Machines



LED Lighting



Projectors



Air Coolers



PCB



Solar Panels



Online UPS



Tubular Battery & Inverter



Fans



Gas Meters



Smart Meters



EV Batteries



Batteries



Software Solutions



Eco-Products



High End Paper



Clothing



Paper & Boards



Textile Industry



Electronics Industry



Power & Energy



Coal Industry

Some Key Highlights of **Genus**

More than **15** factories situated all over India

700 million dollar revenue per annum

10000+ workforce available

Present in more than **100+** million households

Market leader in power meter with over **29%**

Order book value of over **4** billion dollar

40+ years of experience

STRATEGIC PROXIMITY TO MAJOR TRANSIT POINTS

SEA PORTS

Kandla Sea Port (17 Km)
Facilitates quick maritime logistics and is vital for import/export operations.

Mundra Sea Port (45 Km)
One of India's largest ports, enhancing our capability to handle large scale shipments.

Tuna Sea Port (20 Km)
Provides additional logistical advantages, supporting our operational efficiency.

AIRPORTS

Kandla Airport:
5 km – Close proximity allows for rapid air freight and executive travel.

Bhuj Airport:
50 km – Supports both cargo and passenger flights, ensuring connectivity.

Ahmedabad International Airport:
300 km – Connects us internationally, facilitating global business interactions.

BENEFITS

Logistical Efficiency:
Our strategic location near major sea ports and airports significantly reduces transportation time and costs, enhancing our supply chain efficiency.

Accessibility:
Easy access to major transit points ensures timely delivery of goods and swift movement of raw materials.

Connectivity:
Robust connectivity supports our export capabilities and enables us to meet the demands of our international customers promptly.

Factory Address



GENUS ELECTROTECH LTD.
Survey No. 43, Meghpar Borichi,
Galpadar Road, Taluka Anjar, Dist.
Kutch – 370110, Gujarat, India.



ABOUT US

The only EMS company in West India, boasting a **60,500 SQ meter fully automated manufacturing** base equipped with modern technology that meets international standards.

As **one of the fastest emerging companies in the electronics/IT sector of India**, we possess state-of-the-art manufacturing facilities staffed by a team of dedicated professionals.

This is the first Indian venture to achieve total backward integration, encompassing everything from Bare Board PCB, SMT, MI Lines, Injection Molding, LCM Lines, to Final Assembly for the production of various Electronics & IT Products.

Our brand has achieved a **total turnover of 700 million USD**, showing exponential growth annually. We maintain strong ties with our global partners through multi-location manufacturing services in India.

With over **25 years of experience** in obtaining BIS certification for Electronics/IT Products, our company is a leader in its field.

We are certified under ISO 9001:2015, ISO 14001:2015, and ISO 45001:2018. All facilities adhere to global standards and are audited & approved by the world's top brands.

We export coolers to **more than 25 countries**.

ALL EMS SOLUTION UNDER ONE UMBRELLA



**Bare PCB
Manufacturing**



SMT Lines



MI Lines



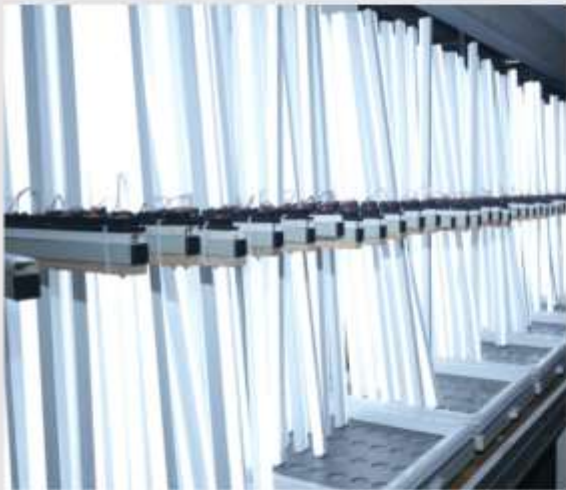
LCM Lines



LCD TV



IFPD



LED Lighting



**Hi-Tech Injection
Moulding Plant**



Air Coolers



Projectors



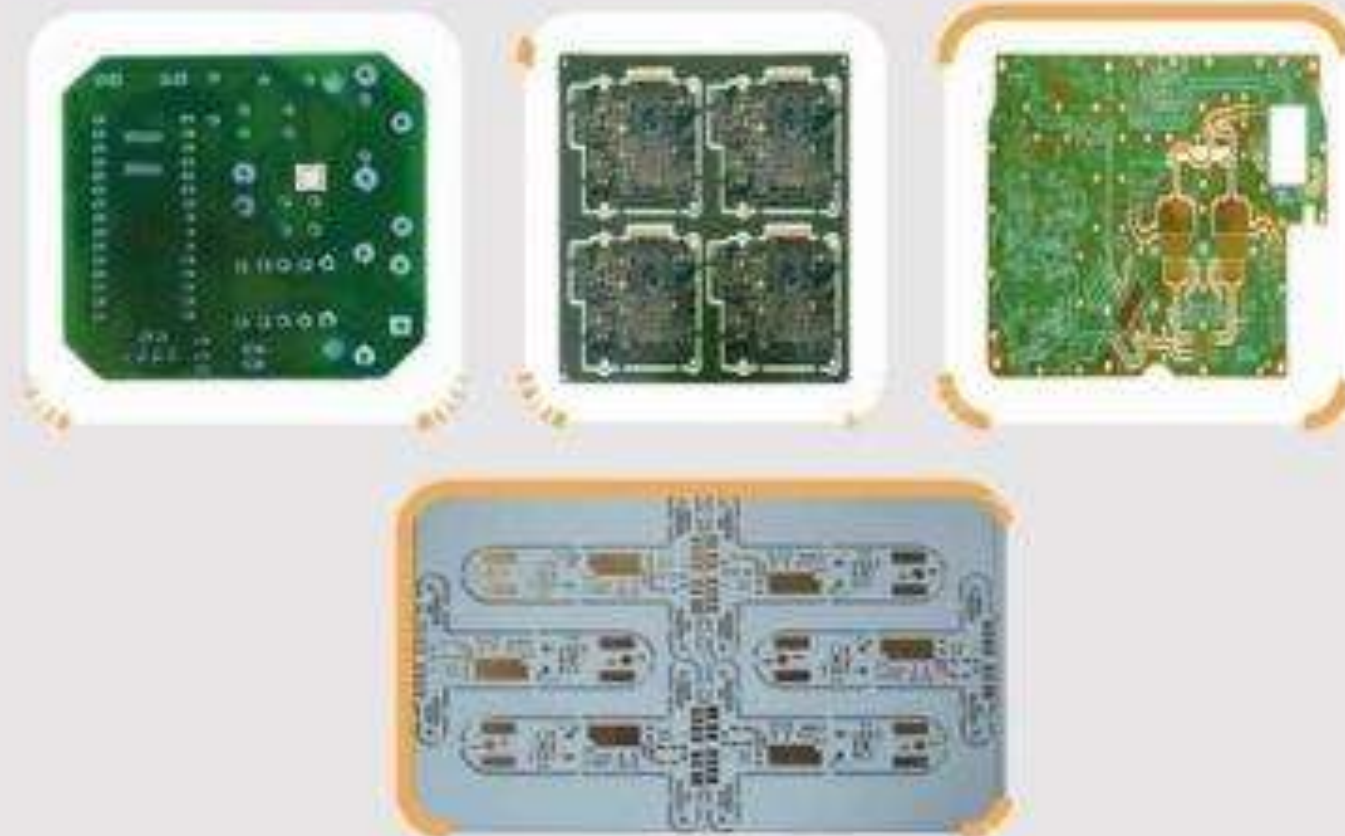
Monitors



Digital Signage



PCB MANUFACTURING FACILITY



CAPACITY & CAPABILITY



MANUFACTURING CAPACITY

Over 10,000 SQM per month, ensuring timely delivery for large-scale projects and orders.



EXPERTISE

Specializes in a high mix, medium volume, and high complexity electronics assembly and manufacturing.



YAMAHA YV 180X

FIVE SMT LINES

Equipped with state-of-the-art machinery capable of handling diverse and complex electronic assemblies.

HIGHLY SKILLED OPERATORS

Our team comprises industry experts with extensive training and experience



JUKI JX-350

MI LINE



Our MI Line is powered by a highly skilled workforce, trained to handle precise manual tasks. The meticulous attention to detail by our team ensures superior quality and performance in every product.

LED TV PRODUCTION OVERVIEW



FULLY AUTOMATED LCM / FA LINES

Equipped with highly skilled manpower.



MANUFACTURING RANGE

Capable of producing 32" to 85" inch LED TV CKD.



PRODUCTION CAPACITY

Both LCM and FA lines have a total capacity of 10K units per day.



PACKAGING EFFICIENCY

Features automated packaging machines for streamlined final processing.



Skilled Manpower

Fully equipped and highly skilled manpower ensures precision and efficiency in production.



Clean Production Environment

Dust-free line setup maintains the highest quality standards throughout the production process.



Final Assembly Efficiency

Final assembly line with a capacity of 600/day aligns with LCM output to maximize efficiency.



Manufacturing Range

Capability to produce IFPDs from 55" to 105", accommodating various market needs.



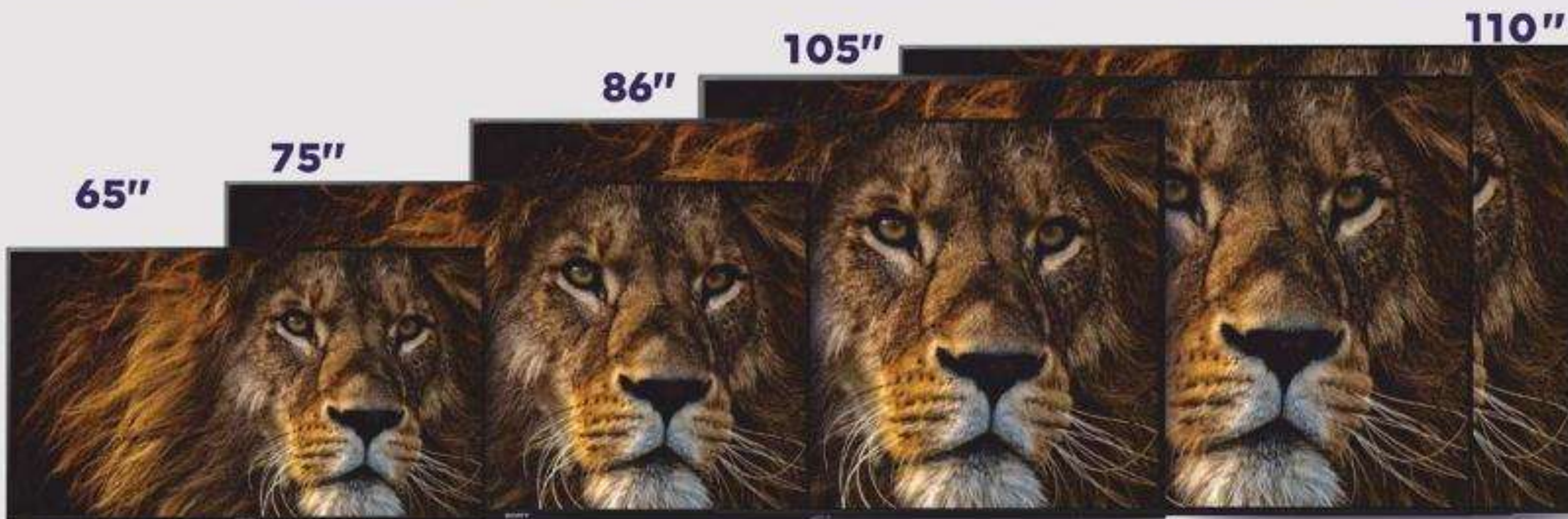
LCM Line Capacity

LCM lines capable of manufacturing 600 units per day, ensuring consistent output.



Quality Control

High-temperature controlled aging room enhances durability testing, while automated packing machines ensure secure and efficient product packaging.



CLEAN ROOM

100K Class

Pre Assembly Line

10K Class

LCM Line

1K Class

Open Cell Assembly

CLEAN PRODUCTION ENVIRONMENT

Maintains a dust-free setup to protect sensitive optical components during assembly.

ADVANCED TESTING FACILITIES

Includes environmental testing chambers that simulate various conditions to ensure projectors can withstand different climates and usage scenarios.

PRODUCTION ACHIEVEMENT

Successfully assembled 9,000 DLP projectors, demonstrating our capability and experience in high-quality manufacturing.

DEDICATED ASSEMBLY LINE

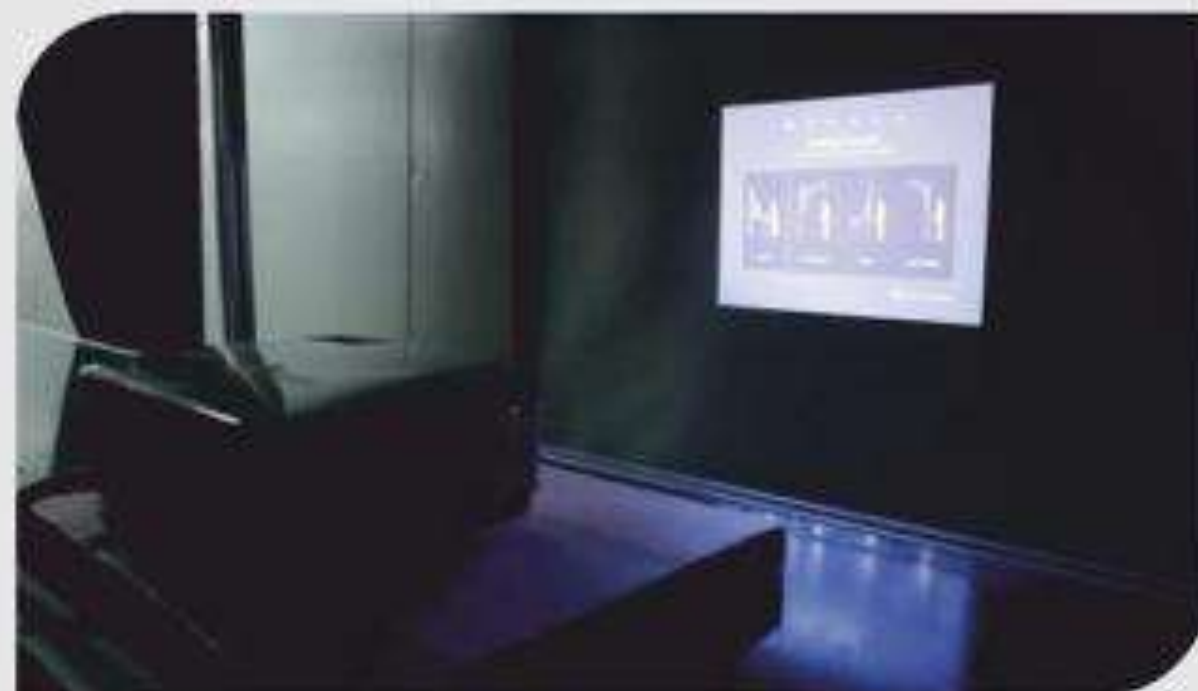
Features a separate assembly line specifically for projectors, ensuring specialized production processes.

EXPERTISE IN DLP PROJECTORS

Our team has hands-on experience assembling DLP projectors, bringing precision and skill to each unit produced.

TESTING AND QUALITY ASSURANCE

Equipped with the necessary testing equipment to rigorously assess each projector for performance and reliability.



INJECTION MOULDING CAPABILITIES ADVANCED EQUIPMENT

Boasts 22 imported injection moulding machines, providing versatility across a range of product sizes and complexities. Here's a breakdown of our machine capacities



- 60 T-1
- 90 T-2
- 120 T-1
- 150 T-1

- 160 T-1
- 200 T-1
- 210 T-2
- 250 T-2

- 280 T-1
- 350 T-2
- 450 T-1
- 650 T-1

- 850 T-1
- 1000 T-1
- 1100 T-1
- 1800 T-1



IN-HOUSE TOOL ROOM

ESTEEMED CLIENTELE





CERTIFICATES AND ACCREDITATION

TCL实业 泛智屏BU
用户满意与质量管理中心

编制日期: 2024-01-09
第1页, 共1页

2024年海外外发工厂FOR目标设定						
FOR target for overseas OEM factories in 2024						
国家	工厂	23年达成	24年目标	H1目标	H2目标	备注
Country	Factory	Achieved in 2023	Target in 2024	H1 Target	H2 Target	Remark
印度	GENUS	2397	2300	3200	2300	/
	MOKA	3944	3500	4000	3500	/
印尼	ARISA	3006	3000	4000	3000	/
	GAS	4468	4000	4500	4000	/
菲律宾	OMNI	18001	6000	10000	6000	/
泰国	THB	3200	3000	3500	3000	/
马来西亚	CICT	3110	3000	3500	3000	/
波兰	MOKA	3447	3400	4000	3400	/
	SEMBLY	/	4000	4500	4000	23年8月量产, 断续生产, 数据不持续, 24年运行半年后, 目标考虑做适当调整 Mass production in August 2023, intermittent production, data not continuous. After running for half a year in 2024, the target is considered to be adjusted appropriately.
南非	HKC	/	8000	10000	8000	23年10月量产, 订单少, 24年运行半年后, 目标考虑做适当调整 Mass production in October 2023, with few orders. After running for six months in 2024, the target is considered to be adjusted appropriately.
	CZ	/	8000	10000	8000	订单量少, 断续生产, 24年运行半年后, 目标考虑做适当调整 Low order volume and intermittent production. After running for half a year in 24 years, the target is considered to be adjusted appropriately.

拟制: 海外QA管理部

审核: 陈丹

批准: 赵恩全

PPM ACHIEVEMENT AND TARGET FOR 2024



Monthly QS Assessment Notification Letter for Overseas

Factories

Honorable Vishnu Todi General Manager: Hello!

We are pleased to inform you that according to our company's "QS Assessment Specification for Overseas OEM Factories", we have evaluated your company's product quality module and service module. Among all ten factories in the same industry that assembling for our company, your company's comprehensive score ranking is: The First Place.
This month's QS assessment meets the standards, please keep working hard and continue to maintain it! The specific assessment results for this month are:

Month	Factory name	Comprehensive score	Detailed description of deduction item
December	GENUS	100	/

Explanation: Comprehensive score (color grade standard): ≥ 90 points (green), 70-89 points (yellow), < 70 points (red)

Best regards!

User Satisfaction and
Quality Management
Center
Manufacturing
Quality Management
Department



January 15th, 2025

QUALITY EXCELLENCE
CERTIFICATE

CERTIFICATES AND ACCREDITATION

海外OEM工厂质量 等级通知函

热烈祝贺印度GENUS工厂



2024年质量等级

A级

结合近6个月QS表现和最近一次飞行
审查分数

TCL质量签批:

Overseas OEM Factory Quality Level Notification Letter

Warm congratulations to GENUS factory



Quality level in 2024

A-level

Combining QS performance over the past 6 months and
the latest flight review score

Approved by TCL Quality :



GUJARAT PREFERRED BUSINESS STATE OF INDIA

ECONOMIC GROWTH

Gujarat's GDP growth is at 11%, surpassing India's national average of 7%.

1

STRATEGIC LOCATION

Boasts 1600km of coastal line with maximum access to major sea ports and airports, well connected to roads.

2

GLOBAL ACCESS

Offers easy access for importing and exporting to Middle East and African countries.

3

LABOR MARKET

Excellent labor availability with notable safety records for the women workforce.

4

GOVERNMENT SUPPORT

Receives strong backing from both State and Central Government, ensuring stable and supportive policies.

5

HEALTHCARE AND EDUCATION

Shows significant improvement in basic amenities in healthcare and education sectors.

6

POLITICAL STABILITY

Has had a stable government for the last 27 years, resulting in consistent and predictable business policies.

7

LEGAL FRAMEWORK

Maintains a robust law and order system within its judicial province.

8

ENERGY SURPLUS

Benefits from a surplus power supply, with the state also exporting power to neighboring regions.

9

INDUSTRIAL HUB

Serves as a hub for polymers and metals, with major companies like Lanxess, Bhansli, and Reliance.

10

INTERNATIONAL COMPARISONS

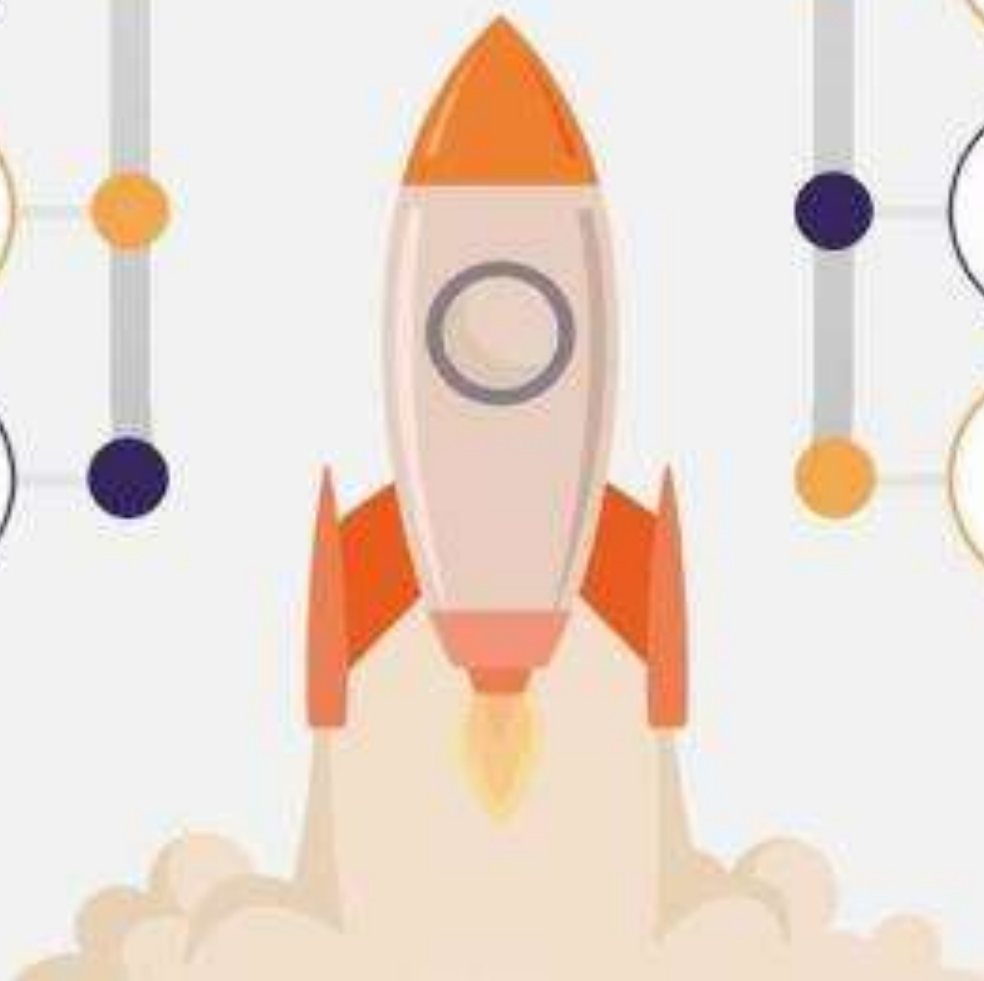
Comparable in industrial growth and development to Guangdong Province in China.

11

INNOVATION AND DEVELOPMENT

Home to the first semiconductor unit established by Micron in India.

12





Import & Export



MUNDRA PORT

(STRATEGIC BUSINESS GATEWAY)



OPERATOR

Managed by Adani Ports and Special Economic Zone Limited (APSEZ), India's largest commercial ports operator, handling nearly one-fourth of the country's cargo movement.



CAPACITY

The largest private and container port in India, featuring 26 berths and two single-point moorings to accommodate diverse vessel sizes.



SPECIAL ECONOMIC ZONE

Includes a well-developed SEZ with the largest Solar Cell Manufacturing Plant, enhancing its industrial attractiveness.



GLOBAL CONNECTIVITY

Offers robust links with all major shipping lines ensuring smooth logistics for exports and imports.



EFFICIENT OPERATIONS

Renowned for the smoothest customs clearance and the fastest cargo evacuation, minimizing turnaround times.



ACCESSIBILITY

Strategically located for easy access to Western, Middle East, and African markets, outperforming other major ports like Chennai, Nhava Sheva, and Delhi ICD.



EXPORT CAPABILITIES FROM MUNDRA PORT

Global Reach: From Mundra Port, we can efficiently export LCD monitors, projectors, and IFPDs directly to markets in the US and Europe.

This capability leverages the port's advanced logistics and its extensive global shipping connections, ensuring timely and secure delivery to key international markets.



SCHEDULE OF COASTAL VESSEL MOVEMENT

Destination	Destination	Seventeen Vessel schedule weekly
1	Cochin	2 vessel
2	Coimbatore	2 vessel
3	Trivandrum	2 vessel
4	Tuticorin	1 vessel
5	Madurai	1 vessel
6	Chennai	1 vessel
7	Pondicherry	1 vessel

Destination	Destination	Seventeen Vessel schedule weekly
8	Mangalore	1 vessel
9	Bangalore	1 vessel
10	Visakhapatnam	1 vessel
11	Haldia , Kolkata	1 vessel
12	Paradip	1 vessel
13	Cuttack	1 vessel
14	Bhubneswar	1 vessel



Congratulations

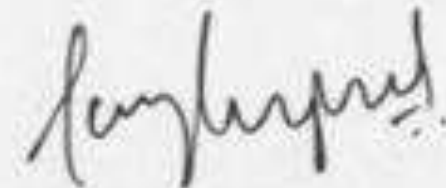
THIS CERTIFICATE IS CONFERRED TO

Genus Electrotech Ltd.

IN HONOUR OF WINNING THE
BEST ELECTRONICS COMPANY

DIAMOND AWARD

DATE: 13TH MARCH 2015
PLACE : AHMEDABAD



JAY RUPAREL
PRESIDENT

CONTACT US



FACTORY ADDRESS:

Survey No.43, Meghpar Borichi,
Galpadar Road, Gandhidham.
Taluka - Anjar, District –Kutch,
Gujarat – 370110



BRANCH OFFICE:

C-65, First Floor, Sector 63
NOIDA UP-201301



REGISTERED OFFICE:

D- 116, Okhla Industrial Area,
Phase-1, New-Delhi-110020



THANK YOU
for your valuable time.



**We at GENUS are committed
for the true care of your benefits.**